

SONIQ Uniformity

Ultrasound Phantom

SONIQ Uniformity allows the user to test linear, curvilinear and intra-cavity ultrasound probes (transducers) for common defects such as damaged transducer elements or cables. Such defects will produce non-uniformities in a uniform phantom.

Accessories:

- Background Rod
- Anechoic Rod

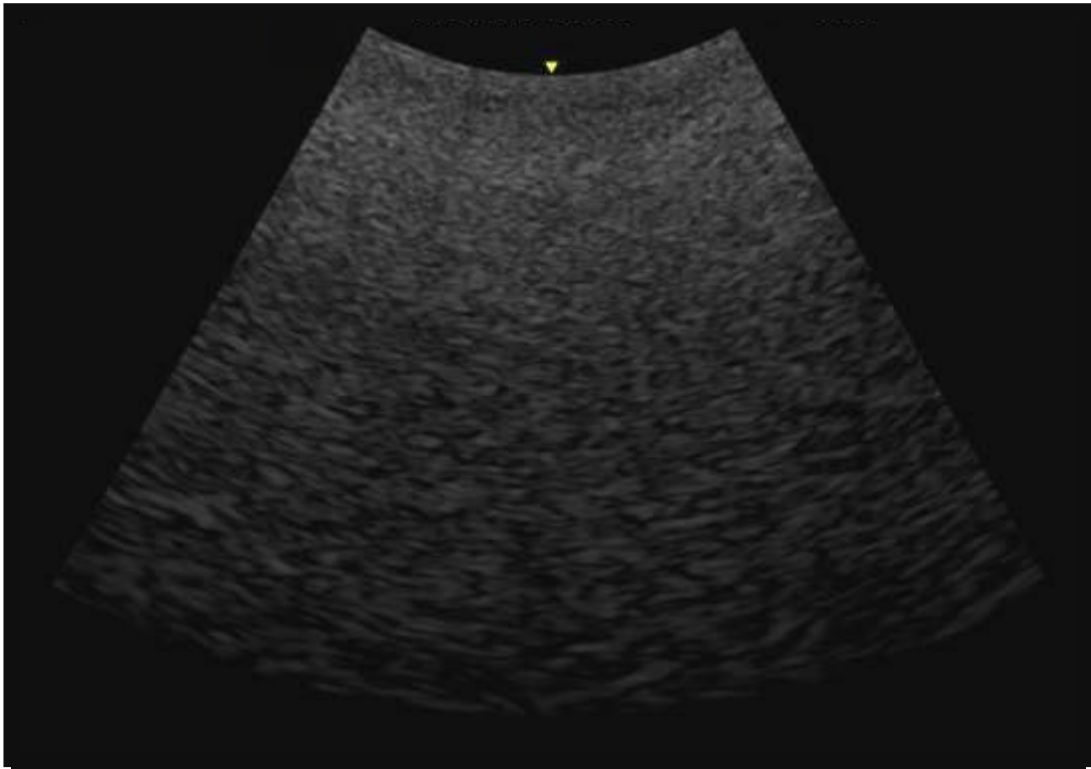


Speed of sound approximately 1000 ± 50 m/s
Attenuation 1 ± 0.1 dB/cm/MHz



SONIQ Uniformity

Ultrasound Phantom



Streak in the Uniformity Phantom
showing transducer defect