

pRESP Motion Platform HD

QUASAR

BY MODUS QA

The QUASAR™ Heavy Duty Respiratory Motion Platform is designed to move any existing phantoms with programmable respiratory and sinusoidal motion profiles for multiple QA processes. The Platform HD's unique multi-directional motion simulation capability allows it to translate both in-line with the sagittal plane in the SI direction, or with a user-defined rotated arrangement.

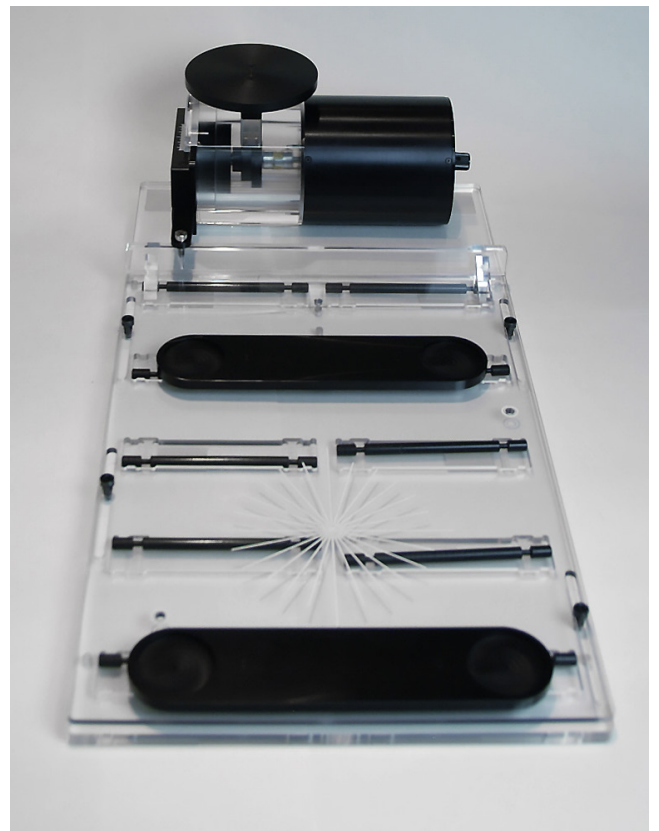
KEY FEATURES

- ▶ **Heavy-Duty:** Large 33.2 x 35 cm platform surface accommodates phantoms up to 100lbs
- ▶ **Multi-directional Motion:** Simulates sinusoidal or programmable multi-directional motion for patient-specific and process QA
- ▶ **Operation:** Operate the platform remotely from a PC or locally from the drive unit
- ▶ **Alignment:** Includes specialized features for rapid in-line or offset phantom alignment
- ▶ **Waveforms:** Import, create, edit and stream custom or patient-specific waveforms
- ▶ **Compatibility:** Chest wall surrogate is compatible with multiple motion tracking systems

With the large 33.2 cm x 35 cm platform surface and an increased load-bearing capacity of 45 kg (100 lbs), the Platform HD adds translational motion to both QUASAR™ stationary phantoms and large-scale third-party phantoms, including the ArcCheck®.

The QUASAR™ Heavy Duty Respiratory Motion Platform includes a Chest Wall Platform – moving in the anterior/posterior direction – which is compatible with motion tracking systems from various 3rd party vendors.

Integrate **Multi-Directional Motion** into Any Large-Scale Phantom up to **100 lbs**



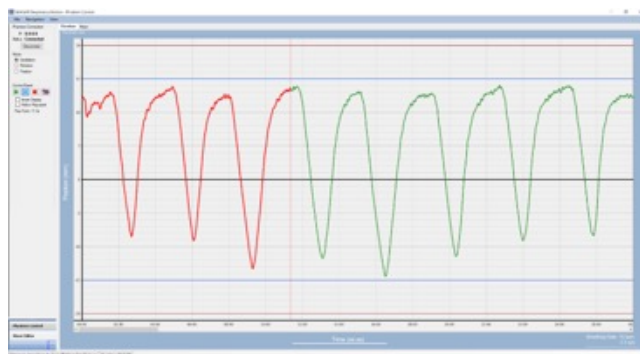
Above: Platform HD at 1 Dimensional or 0° Orientation

PATIENT-SPECIFIC SOFTWARE

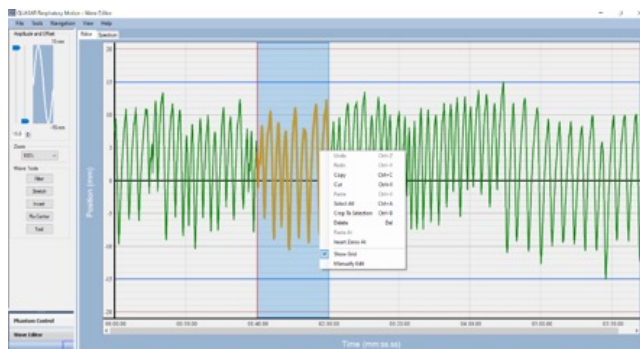
Included with the Platform HD is the QUASAR™ Respiratory Motion QA Software, which allows you to import, create, edit and save respiratory waveforms. Designed to smoothly operate at typical patient respiratory rates of up to 60 BPM, the Platform HD works in tandem with the programmable software to playback user-customizable waveforms with a high-degree of accuracy (10 mS sampling rate).

Easily import process and patient-specific waveforms from a number of respiratory gating machines including Varian Real-time Position Management™ (RPM), Anzai, Cyberknife, Philips, Respiscans, and Siemens. Quickly create custom waveforms or import unique waveforms in compatible .VXP, .CSV, .TXT, .DCM, .LOG, .DAF, .IMA file formats.

Conveniently edit waveforms using a wide range of functions including adjusting the amplitude, stretching or compressing the timeline and filtering out high frequency noise, low frequency drift and cardiac signals. The software is compatible with Windows 7 or better.



Above: Phantom Control Module



Above: Wave Editor Module

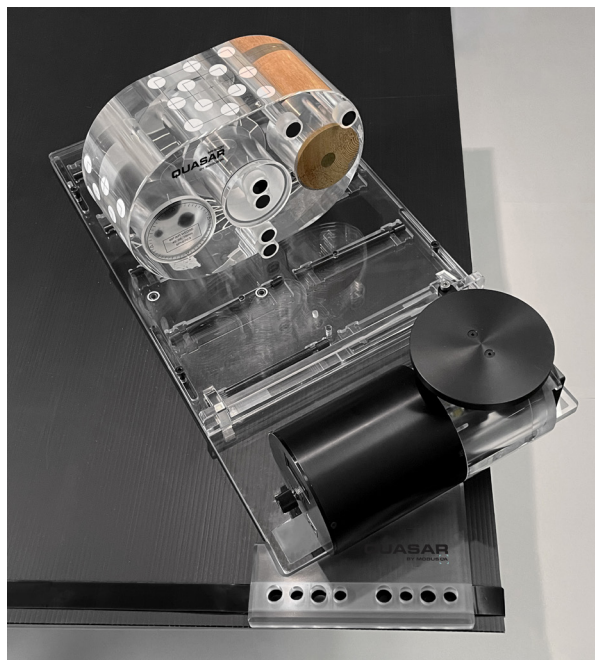
DOSIMETRIC AND NON-DOSIMETRIC QA

Use the Platform HD with the QUASAR™ Multi-Purpose Body Phantom as a time- and cost-efficient method of adding motion and gating testing capabilities into your adaptive end-to-end QA protocols.

As a flexible QA tool designed to perform both dosimetric and non-dosimetric tests on treatment simulation, planning and delivery systems, the QUASAR™ Multi-Purpose Body Phantom incorporates a wide variety of interchangeable test objects in a solid acrylic housing. Being paired with the Platform HD, it is easily converted into an IGRT gating phantom.



Above: Dosimetric and non-dosimetric tests for end-to-end RT system testing



Above: Added IGRT gating QA onto Multi-Purpose Body Phantom

SPECIFICATIONS

- ▶ Motion Platform: 33.2 cm x 35 cm weight-bearing load up to 45kg (100 lbs)
- ▶ Overall Dimensions: 67.6 cm x 35 cm x 15 cm (H)
- ▶ Mass: 8 kg (excluding third-party phantoms)
- ▶ Chest Wall Platform: 13 cm diameter, carries up to 1 kg
- ▶ Power Supply:
 - Input: 110 – 240V~, 50-60 Hz, 1.0A
 - Output: 24Vdc, 2.1A
- ▶ Approvals: CE, UL/CSA 60950-1

MINIMUM TECHNICAL REQUIREMENTS

Operating System: Windows 7 SPI, and 10
Ports: 1 Ethernet

ORDERING INFORMATION

- 100-1010-200 QUASAR™ Programmable Heavy Duty Respiratory Motion Platform
- ▶ 1 - Software License
 - ▶ 1 - QUASAR™ Respiratory Motion Platform HD
 - ▶ 1 - 30 degrees CCW Alignment Wedge
 - ▶ 1 - Chest Wall Surrogate Platform
 - ▶ 1 - ArcCheck® Feet Support
 - ▶ 1 - User's Guide
 - ▶ 1 - Heavy-Duty Shipping Case (5kg)

RELATED PHANTOMS

100 - 1004 QUASAR™ Multi-Purpose Body Phantom

© 2021 Modus Medical Devices Inc. All Rights Reserved. Specifications subject to change without notice. Modus QA is not responsible for errors or omissions. Modus QA makes no warranties or commitments concerning the availability of future products or versions that may be planned or under development. PDS #100-1010-200, REV #01.21

Modus QA
1570 North Routedledge Park,
London, Ontario Canada, N6H 5L6

Toll Free: +1 (866) 862-9682 (North America)
Phone: +1 (519) 438-2409
Fax: +1 (519) 643-0127

[e] info@modusQA.com
[w] www.modusQA.com

MODUS QA
TRUSTED ACCURACY