

WATER-EQUIVALENT MULTI-MODULAR PHANTOM FOR QA IN RT

DESCRIPTION

EASY CUBE supports QA measurements in dosimetry and beyond in the field of radiation oncology. The phantom can be used in combination with irradiation detectors like ionization chambers, radiosensitive films and TLDs.

The detectors are positioned inside the phantom with appropriate adapters which consist of the same material as the phantom.

PACKAGES

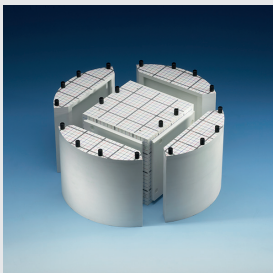
EASY CUBE CORE PACK

- EASY CUBE
- EASY CUBE Set of plates
- Accessories
 - 1 Easy Cube IC Adapter Bar*, Set of Distance Bars & Spacers, Leveling Plate small, Transport & Storage case



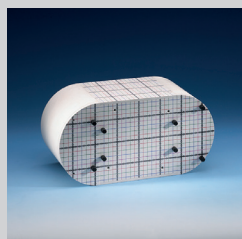
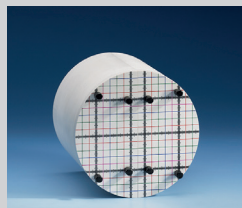
EASY CUBE CYLINDER PACK S or F

- EASY CUBE
- EASY CUBE Set of plates
- **Cylinder Module S/F**
4 cylindrical extensions S or F (solid or fillable)
- Accessories
1 EASY CUBE IC Adapter Bar*, Set of Distance Bars & Spacers, Leveling Plate large, Transport & Storage case



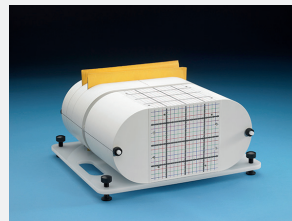
EASY CUBE HEAD/OVAL PACK F

- EASY CUBE
- EASY CUBE Set of plates
- **Head/Oval Module F**
2 half-cylinders F
- Accessories
1 EASY CUBE IC Adapter Bar*, Set of Distance Bars & Spacers, Leveling Plate large, Transport & Storage case



EASY CUBE BODY PACK S

- EASY CUBE
- EASY CUBE Set of plates
- **Body Module S**
2 half-cylinders S, Distance Plates body shaped with needles for film alignment
- Accessories
1 EASY CUBE IC Adapter Bar*, Set of Distance Bars & Spacers, Leveling plate large, Transport & Storage case



EASY CUBE UNIVERSAL PACK

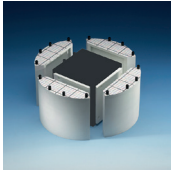
- EASY CUBE
- EASY CUBE Set of plates
- **Body Module S**
2 half-cylinders S, Distance Plates body shaped with needles for film alignment
- **Cylinder Module F**
4 cylindrical extensions F (fillable)
- Accessories
2 EASY CUBE IC Adapter Bars*, Set of Distance Bars & Spacers, Leveling plate large, Transport & Storage case



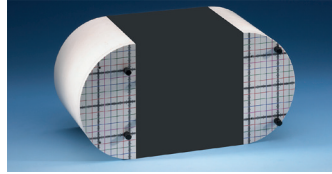
* EASY CUBE Adapter Bar for ionization chamber has to be specified by customer, depending on his IC of choice

SINGLE ITEMS

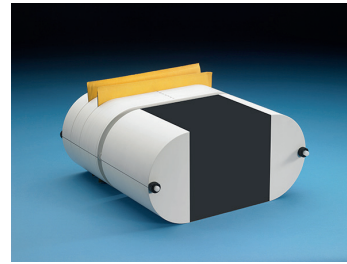
FOR INDIVIDUAL SET-UP OF EXTENSION MODULES



Cylinder Module S / F
4 cylindrical extensions
(solid or fillable)



Head/Oval Module F
2 EASY CUBE half-cylinders F
(fillable)



Body Module S
2 EASY CUBE half-cylinders S (solid)
Distance Plates body shaped with needles for film alignment (15 plates each 10 mm thick, numbered from 1 to 15, one plate 5 mm thick)

ACCESSORIES

■ Set of Inhomogeneous Inserts

(Water, lung, fat, muscle, bone, titan)



■ Detector adapters

EASY CUBE IC Adapter Bar (various types)

EASY CUBE Film Adapter Plate

EASY CUBE TLD Adapter Plate



■ Stereotactic Localizer Plates

Set of Localizer Plates (6 plates, 24 screws)



■ Compensation Elements

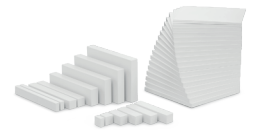
EASY CUBE Set of plates

(16x 10, 1x 5, 2x 2, 1x 1 mm)

Set of Distance Bars & Spacers
(8 bars & 6 spacers)

Set of Spacers (6 spacers)

Set of Distance Bars (8 bars)



■ Leveling Plates

Leveling Plate small

(180 mm x 440 mm)

Leveling Plate large

(380 mm x 440 mm)



www.LAP-LASER.com

LAP GmbH

Laser Applikationen

Zeppelinstrasse 23

21337 Lueneburg

Germany

Phone +49 4131 9511-95

Fax +49 4131 9511-96

Email info@lap-laser.com



TECHNICAL DATA

Material	Water-equivalent white polystyrene "RW3" for high-energy photon and electron radiation
Energy range	Photons ⁶⁰ Co - 25 MV Electrons 4 - 23 MeV
Material composition	Polystyrene (C ₈ H ₈) with admixture of 2.1 % ± 0.2 % TiO ₂
Mass density	1.045 g /cm ³
(Z / A), value	0.536
Electron density	3.386 × 10 ²³ e /g
Electron concentration	3.39 × 10 ²³ e /cm ³

DIMENSIONS

EASY CUBE	180 × 180 × 180 mm
Cylinder Module	320 mm diameter, 180 mm height
Head / Oval Module	Head: 180 mm diameter, 180 mm height Oval: 360 mm length, 180 mm width, 180 mm height
Body Module	360 mm length, 335 mm width, 180 mm height

