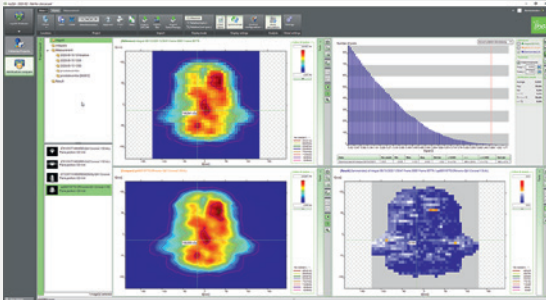


myQA Patients



AVAILABLE NOW

The next generation MatriXX detector
offering unrivaled resolution.

MatriXX RESOLUTION™

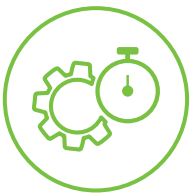
**Highest resolution for IMRT & VMAT
Patient QA measurements and for Machine QA**

- ✓ 6.5 mm resolution
- ✓ 1,521 ionization chambers
- ✓ Battery operated, cable-free design

MatriXX RESOLUTION™



Highest resolution ionization chamber detector array for independent VMAT / IMRT Patient QA and Machine QA



Unrivaled Efficiency

- Fast and straightforward detector setup.
- No cables required through complete wireless and battery-powered design.
- Efficient measurements and verification with myQA® software.



Outstanding Accuracy

- 50 % more measurement points compared to previous MatriXX detectors for highest IMRT & VMAT measurement resolution.
- Wireless Gantry Sensor+ enables precise QA of rotational cases.
- Confidence through independent QA.

Efficiency & Accuracy

Workflow simplicity

MatriXX Resolution is optimized for your workflow efficiency. The entire process is typically completed in less than 5 minutes, from detector setup to measurement to test result:

Fast and easy setup

- Laser alignment of the detector or phantom on the treatment couch.
- Wireless connection to the software or alternatively with Ethernet cable.

Beam-triggered measurements

- The detector waits for the beam.
- Automatic measurements of all beam energies in a single run with myQA software.
- FF/FFF beams supported.

Instant results

- Immediate and automatic processing of the measurements in myQA.
- Easy validation of test results.

Test approval and archiving

- Approval and commenting option with adjustable user rights.
- Results are stored centrally for in-depth reviews, analysis, and reporting.

Benchmark technology

6.5 mm highest resolution for VMAT/IMRT QA

- 1521 ionization chambers.
- 25.3×25.3 cm² field size.
- Measure field sizes larger than 40 cm with combined fields functionality.

Center chamber

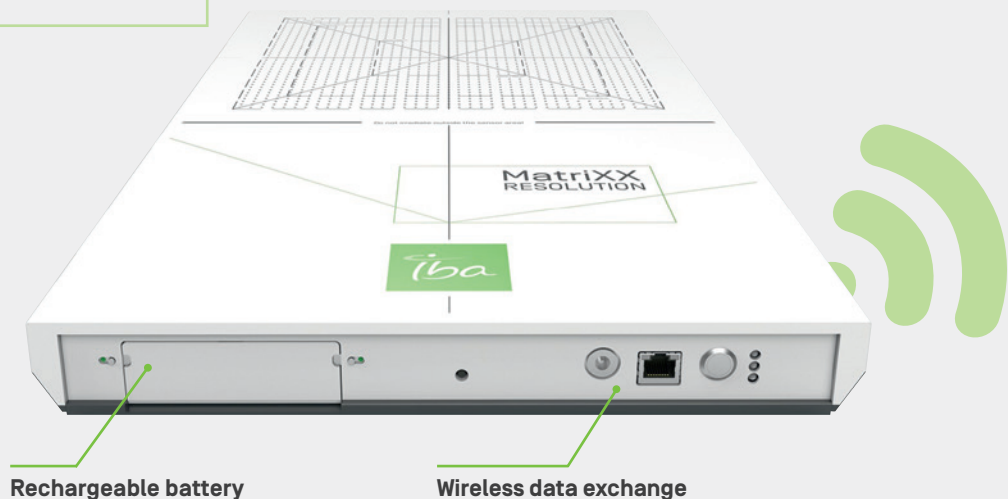
9 chambers in the center of the array provide accurate dose and calibration measurements.

High-resolution centerline and diagonal measurements

The 39 ionization chambers for each centerline offer greater accuracy, especially in the penumbra regions.

Light field check

Field size markers permit easy verification of the light field's conformity with the radiation field.



Rechargeable battery

Wireless data exchange

The wireless / cable-free design enables a convenient workflow from fast system setup to the flexible use of MatriXX Resolution at multiple Linacs.

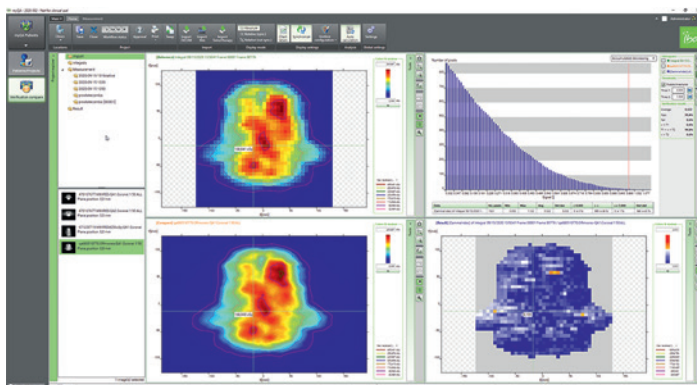
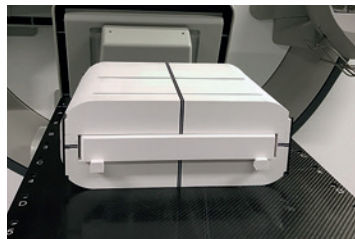
myQA[®] software and accessories for Patient QA

Smartly designed measurement tools and advanced integrated verification software are your basis for efficient & precise QA. MatriXX Resolution represents the optimal solution for pre-treatment plan verification and Linac QA.



miniPhantom R & Gantry Sensor+

- Solid phantom with elliptical geometry used for optimal Patient and Machine QA with the MatriXX Resolution, film, and ionization chambers.
- Simulate measurements at a certain material depth.
- Fast and reproducible setup and position of the MatriXX detector, chambers, or films.
- Optional: 3 different chamber inserts and film insert with effective points of measurement matching the MatriXX Resolution detector.
- Gantry Sensor+ for accurate measurements of rotational treatments.

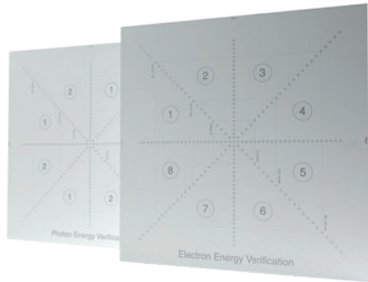


Software myQA Patients

- myQA Patients software enables efficient plan verification in 4 easy steps. Discover more about myQA on our [website](#).
- Connected to myQA and central database for network-wide data access.
- Field-by-field workflow for TG-119 IMRT commissioning supported.
- Combined fields for the support of QA for large fields (>40 cm).
- Automated alignment and isocenter location.

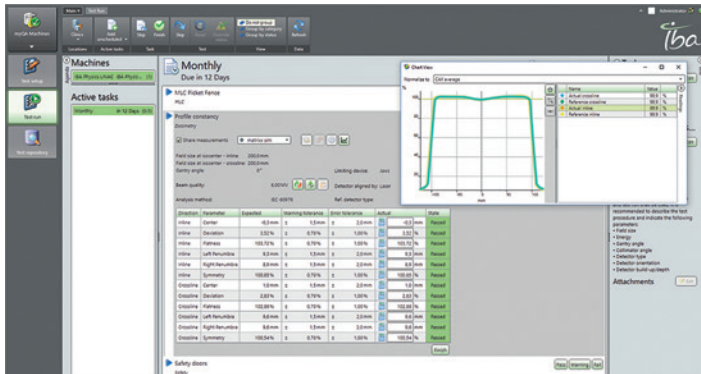
myQA[®] software and accessories for Machine QA

MatriXX Resolution supports measurements for your advanced Linac Machine QA. Dedicated software and energy verification plates are the perfect additions to widen the applications of your MatriXX Resolution detector.



Energy Verification Plates for Energy Constancy Verification

- Dedicated build-up plates for the MatriXX Resolution detector.
- Convenient beam constancy verification in one single shot.



Software myQA Machines

- MatriXX Resolution with myQA Machines software enables advanced Linac Machine QA, e.g. periodic checks (weekly, monthly...). TG-142 supported.
- Tests include profile analysis, trend analysis, energy & dose output / wedge factor.
- Measure all tests with a single beam.
- Enhance your tests with the Energy Verification Plates.

Instant results at your fingertips

The myQA Cockpit is your browser-based interface that provides all your essential QA data and status overviews.

- Instant QA overview with intuitive and clear reporting, accessible anytime and anywhere.
- Quick access to your Patient & Machine QA status and test results.



Supported Treatment Delivery Systems

MatriXX Resolution, your ideal solution for independent Patient QA and Machine QA:

- Standard C-arm Linacs (FF / FFF beams)
- Varian[®] Ethos[™] / Halcyon[™] 1
- TomoTherapy[®] / Radixact[®] 1



MatriXX Resolution, your ideal solution for independent VMAT / IMRT Patient QA and Machine QA

Specifications

MatriXX Resolution detector array	
Field size/Active measurement area [cm]	25.3 × 25.3
Number of detectors	1,521
Resolution [center-center distance] [mm]	6.5
Detector/sensor type	IC
Detector size / chamber size [mm]	3.2 × 2.0
Chamber volume [mm ³]	16
Array Dimensions [cm]	56 × 6 × 32
Array weight [kg]	~8.5
Supported energies	Electrons/Photons [FF/FFF]
Power	Rechargeable battery
Data transfer	Wireless or Ethernet

miniPhantom R	
Outer dimension [cm]	38 × 32.1 × 14.4
Weight [without inserts, kg]	12.5
Material	RW3

myQA® Software	
Supported operating systems:	Windows 10, 64-bit, US English
Supported SQL Servers™:	SQL Server™ 2016 SP2 or higher
Minimum hardware requirements [or equivalent virtual runtime environments]:	<ul style="list-style-type: none"> Processor: Intel® Core™ i5 or higher desktop or mobile processor. RAM of 8GB or more, 16GB required when SRS Detector is used Graphics Card: DirectX 9c compatible, 256 MB Video RAM, no shared memory Ethernet minimum 10Mbit/ Ethernet [RJ-45] plug to connect controllers and other measurement devices
Supported screen resolutions and optimal DPI settings:	<ul style="list-style-type: none"> 1920 × 1080 [FHD] with 100% or 125% 2560 × 1600 with 200% 3840 × 2160 [QHD = 4K] with 250%
Supported virtual runtime environments:	<ul style="list-style-type: none"> Full desktop virtualizations simulating the above requirements, e.g. VMware™ ESXi Oracle VirtualBox™ Microsoft® Hyper-V™ XEN Desktop™ 7.15.2000.291 [Windows 10 64-bit, 1 user]

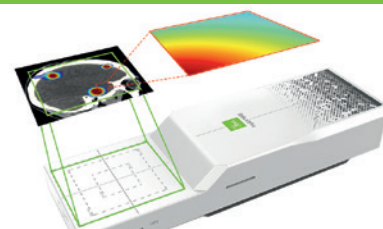
Shaping the future of stereotactic Patient QA:



The power of SRS revealed!

NEW: Need film-class 0.4 mm high resolution and digital workflow efficiency for your **SRS & SBRT Patient QA?**

Discover **myQA® SRS**



FOLLOW AND STAY UP TO DATE

- [Linkedin.com/company/iba-dosimetry-gmbh](https://www.linkedin.com/company/iba-dosimetry-gmbh)
- [Twitter.com/ibadosimetry](https://twitter.com/ibadosimetry)
- [YouTube | youtube.com/user/ibadosimetry](https://www.youtube.com/user/ibadosimetry)

IBA Dosimetry

Independent & Integrated Quality Assurance
Europe, Middle East, Africa | +49-9128-6070
North America and Latin America | +1 786 288 0369
Asia Pacific | +86-10-8080-9288
dosimetry-info@iba-group.com | iba-dosimetry.com

