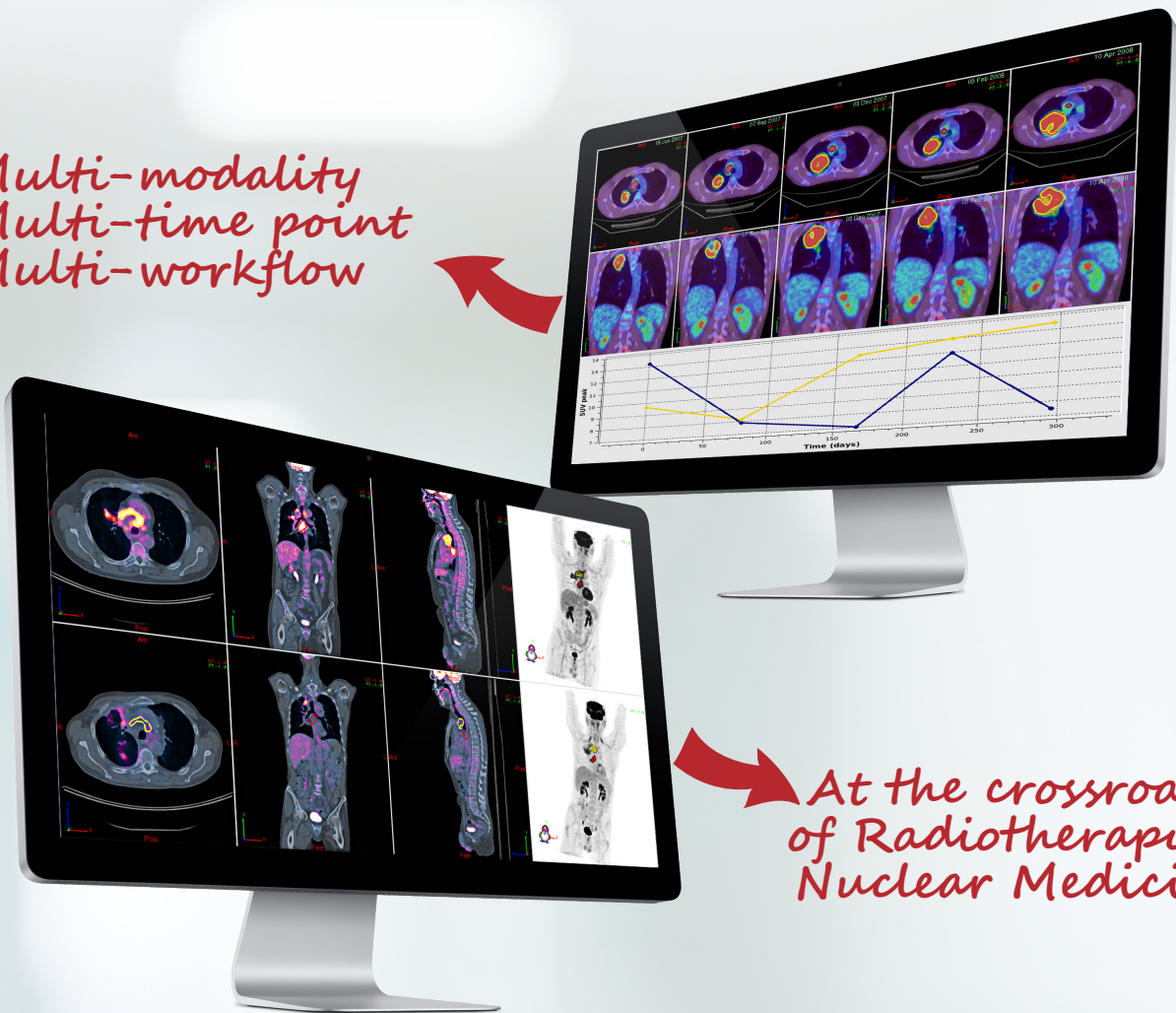


# PLANET<sup>®</sup> Onco

Oncology Software for Molecular Imaging & Radiotherapy

*Multi-modality  
Multi-time point  
Multi-workflow*



*At the crossroads  
of Radiotherapy &  
Nuclear Medicine*

Multimodal image management  
Registration & contouring tools  
Advanced segmentation features  
VOI quantification - Texture analysis  
Patient's response to cancer therapy

**Adaptable  
Time-saving  
Vendor-neutral**

## INTEGRATED

Comprehensive multi-modal image reviewing  
-  
Rigid/elastic registration  
-  
2D & 3D fusion of anatomical & functional series  
-  
Multi-time point quantification  
-  
Disease diagnosis & follow-up (RECIST & PERCIST)

## FAST & EASY

OAR contouring  
-  
Fully automatic segmentation for lung, bones, etc.  
-  
GTV definition using functional imaging  
-  
Reproducible segmentation for NM images  
-  
DICOM RT-Struct import-export

## ADVANCED

Partial volume effect correction  
-  
Automatic uptake detection for whole body NM series  
-  
Texture analysis  
-  
Support for radiomics studies  
-  
AI-based auto-contouring assistance\*



How does PLANET® Onco optimize your patient imaging data processing?

