



TOR MAS / MAX

Mammography Phantoms

A test object designed to be used quickly and easily on a routine basis to provide an ongoing check of imaging performance, particularly those aspects which are most liable to deterioration. An ongoing record of these numbers will reveal any trend towards deterioration in imaging performance.

TOR MAS and TOR MAX Consist of the following:

- **Standard PMMA test block**
(6 pieces 10.0±10%mm thick pmma 240mm diameter semi-circle
2 pieces 5.0±10%mm thick pmma 240mm diameter semi-circle)
- **Sensitometry**
(Ten-step grey-scale plus two points for Sensitometric measurements)
- **High Resolution limit**
(1.0 to 20.0 LP/mm)
x1 for TOR MAS
x2 for TOR MAX
- **Low Contrast Resolution**
(1.8 to 5 line pairs/mm, representing filamentary structures)
- **Low-contrast large-detail detectability**
(12 details, 5.6mm diameter)
- **High-contrast small-detail detectability**
(11 details, 0.5 and 0.25mm diameter)
- **Microcalcifications**
(Particles representing microcalcifications on a step-wedge background, median sizes 125, 225, 325 microns)





TOR MAS / MAX

Mammography

Product X-Rays



fig. 1 TOR MAS X-ray image

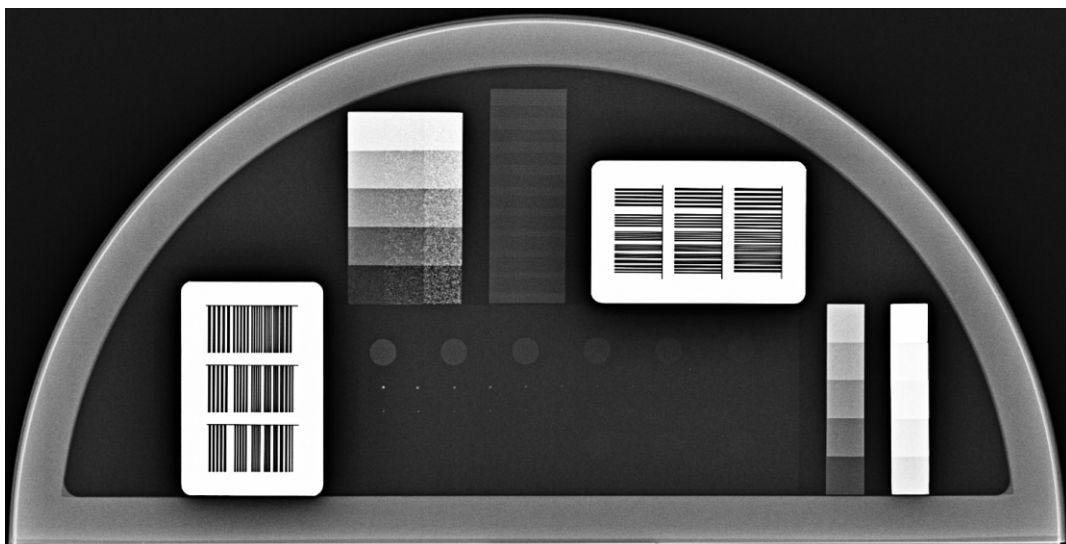


fig. 2 TOR MAX X-ray image

www.leadstestobjects.com