



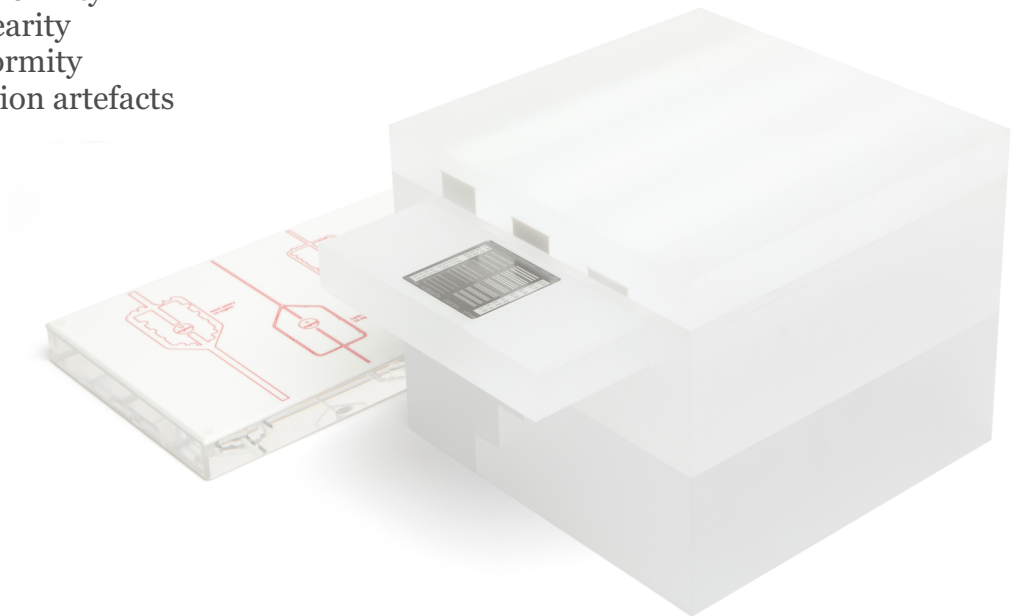
# TO DSA

## Digital Subtraction Angiography Phantom

The TO DSA phantom is used for quality control testing of the image quality performance of digital subtraction angiography systems. It has been designed in accordance with **AAPM Report 15**: "Performance evaluation and quality assurance in digital subtraction angiography".

TO DSA enables measurement of:

- video system stability
- dynamic range
- spatial resolution
- contrast (iodine) resolution
- contrast uniformity
- contrast linearity
- spatial uniformity
- misregistration artefacts

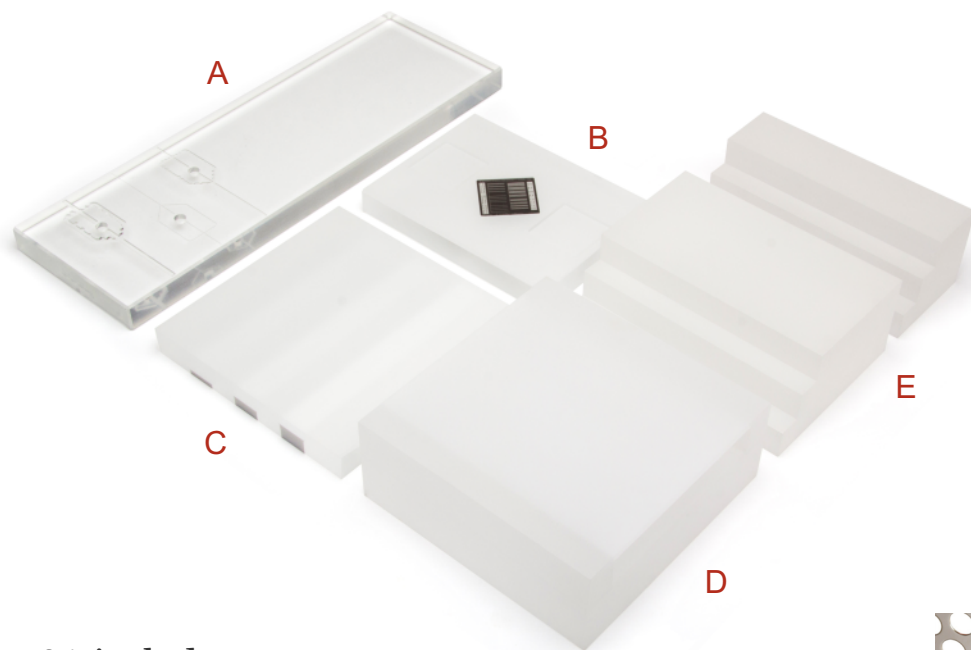


[www.leadstestobjects.com](http://www.leadstestobjects.com)

# TO DSA

DSA Phantom

## Details



*\*new\**  
mis-registration  
artefacts



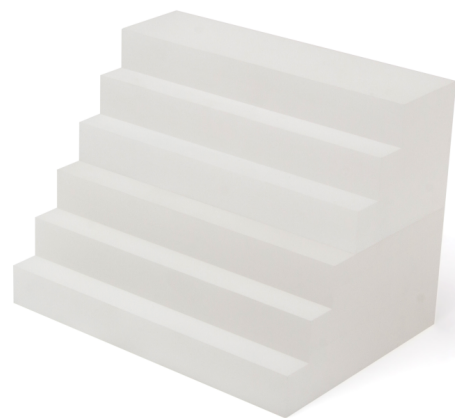
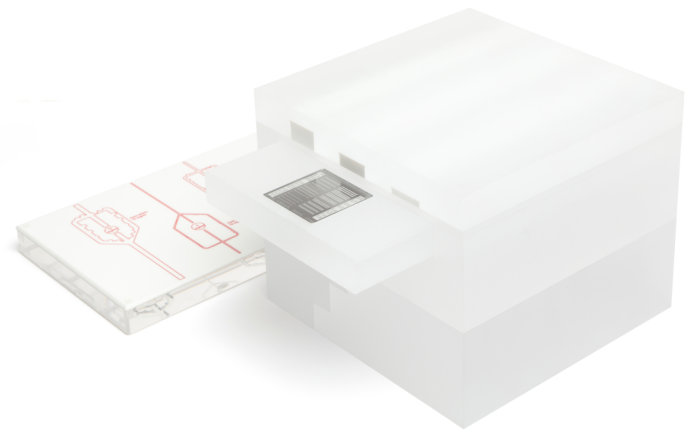
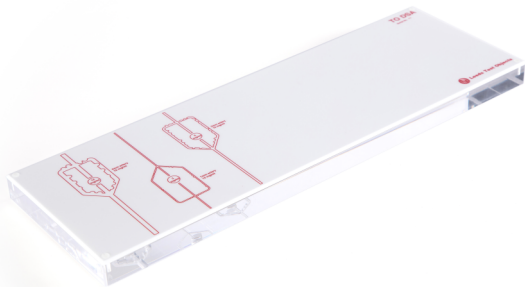
### TO DSA includes:

- A Vessel (& blank) block**
  - Comprising of 1, 2 and 4 mm wide arteries each filled with 15mg/ml iodine.
  - Includes 3 circles each with a different iodine concentration for linearity testing test block.
- B Spatial resolution block**
  - Allows the insertion of the spatial resolution test pattern in 3 different orientations.
  - Type 38-001 test pattern included (0.6-5 LP/mm, 0.01 mm lead thickness).
- C Bone block**
  - Comprising of 5.5, 10.5 and 15.5 mm thick bone inserts.
- D Slot block**
  - Includes a slot at the centre of the block allowing insertion of the manifold block and test block
  - Can be used to increase simulated body thickness by 75mm
- E Step wedge (2 parts)**
  - Comprising of 6 steps each 25mm high
  - When positioned together, they form a solid block 75mm thick which can be used with the slot block to simulate a patient's body.
- F Mis-registration artefacts**
  - Aluminium 200x200x1.5mm (3mm dia holes, 5mm staggered pitch)



# TO DSA

## Digital Subtraction Angiography Phantom



[www.leedstestobjects.com](http://www.leedstestobjects.com)