



DSF Set

Digital Subtraction Fluoroscopy Phantom

A set of four test objects, the DSF set is supplementary to the SFS set of test objects and checks those parameters which are particularly relevant to DSF imaging. After mask images have been obtained the image content is changed by the manipulation of various plates.

Set includes:

- TO J3

Log/Linear subtraction ADC and DAC operation: 10-step wedge with linear transmission profile, 9-step wedge with logarithmic transmission profile. Operating headroom (highlight overload) 9 step wedge exceeding the peak reference level

- TO Q3

Dynamic range of imaging capability. Contains four quadrants of relative transmission 100%, 33%, 10%, 3.3%. Each quadrant contains 16 details, 8mm diameter, with contrast ranges 0.18 to 0.001. Filter Plate plus Detail and Blank Plate

- TO 20

Threshold-contrast detail-detectability: 144 details (12 sizes x 12 contrasts), size range 11mm to 0.25mm, contrast range 0.0014 to 0.924 @ 75kV, 1.5mm Cu filtration

- TO D3

Systematic mis-registration artefacts: 91 details, 11mm diameter, contrasts 0.83, 0.46, 0.13





DSF Set
DSF Phantoms

Product X-ray

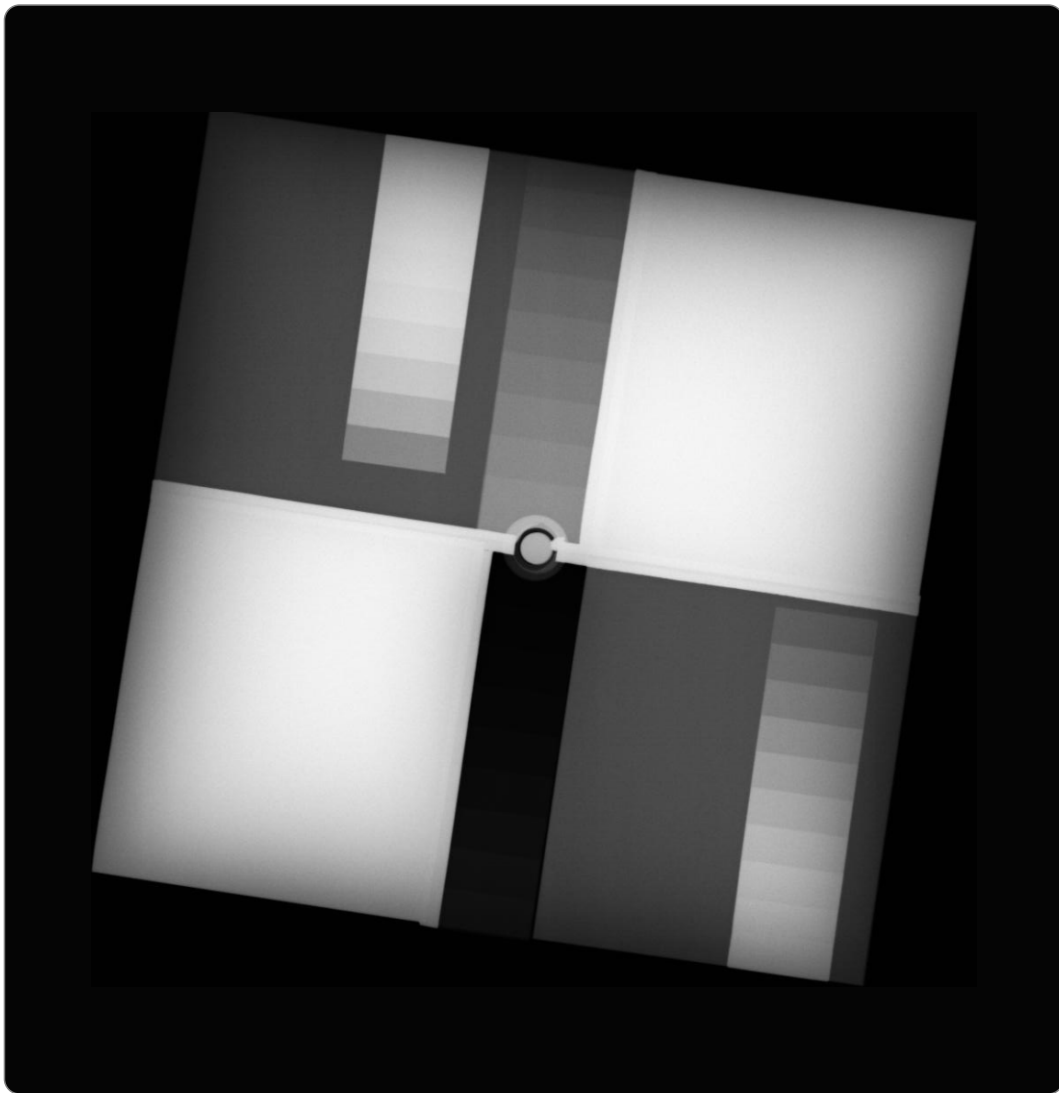


fig. 1 Radiograph of TO J3



DSF Set
DSF Phantoms

Product X-ray

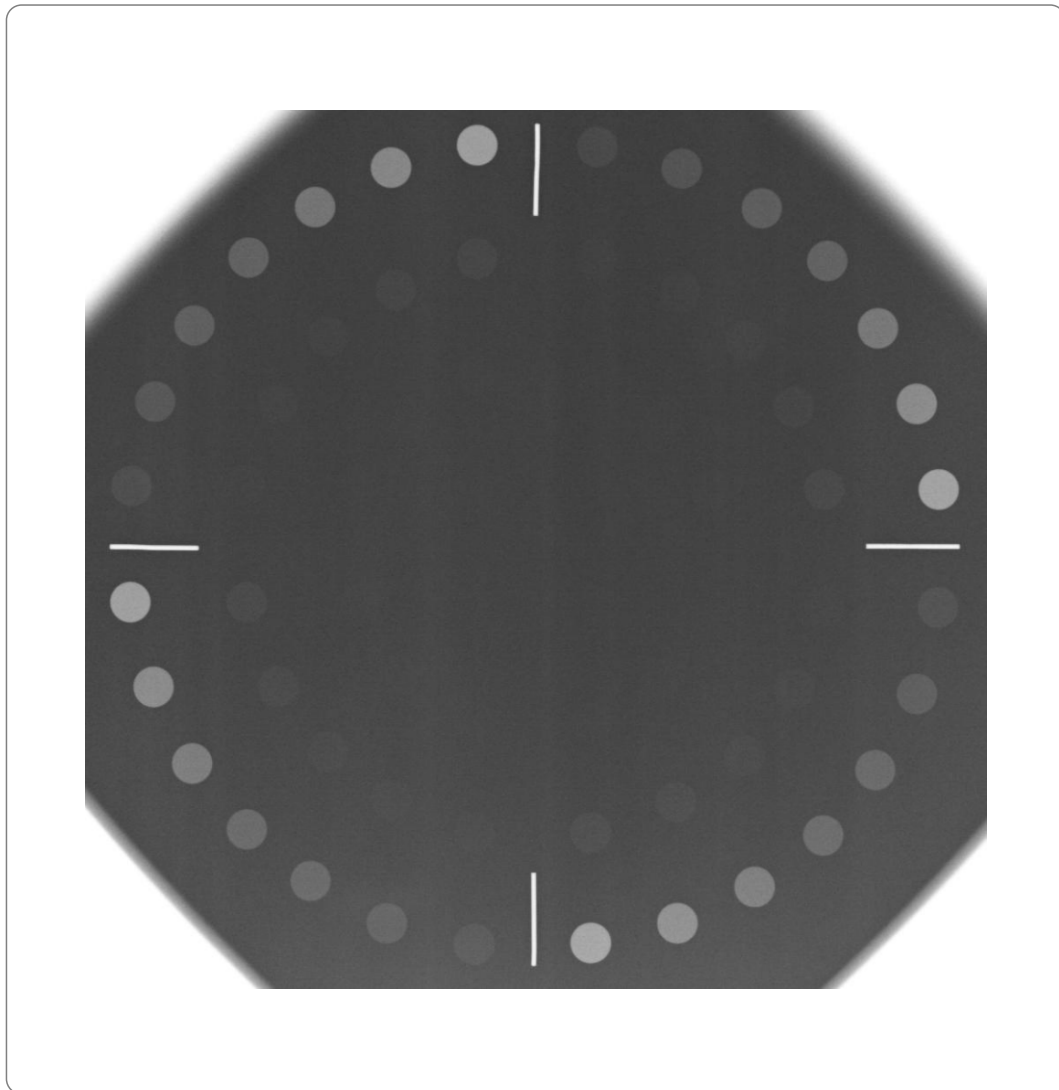


fig. 2 Radiograph of TO Q3



DSF Set
DSF Phantoms

Product X-ray

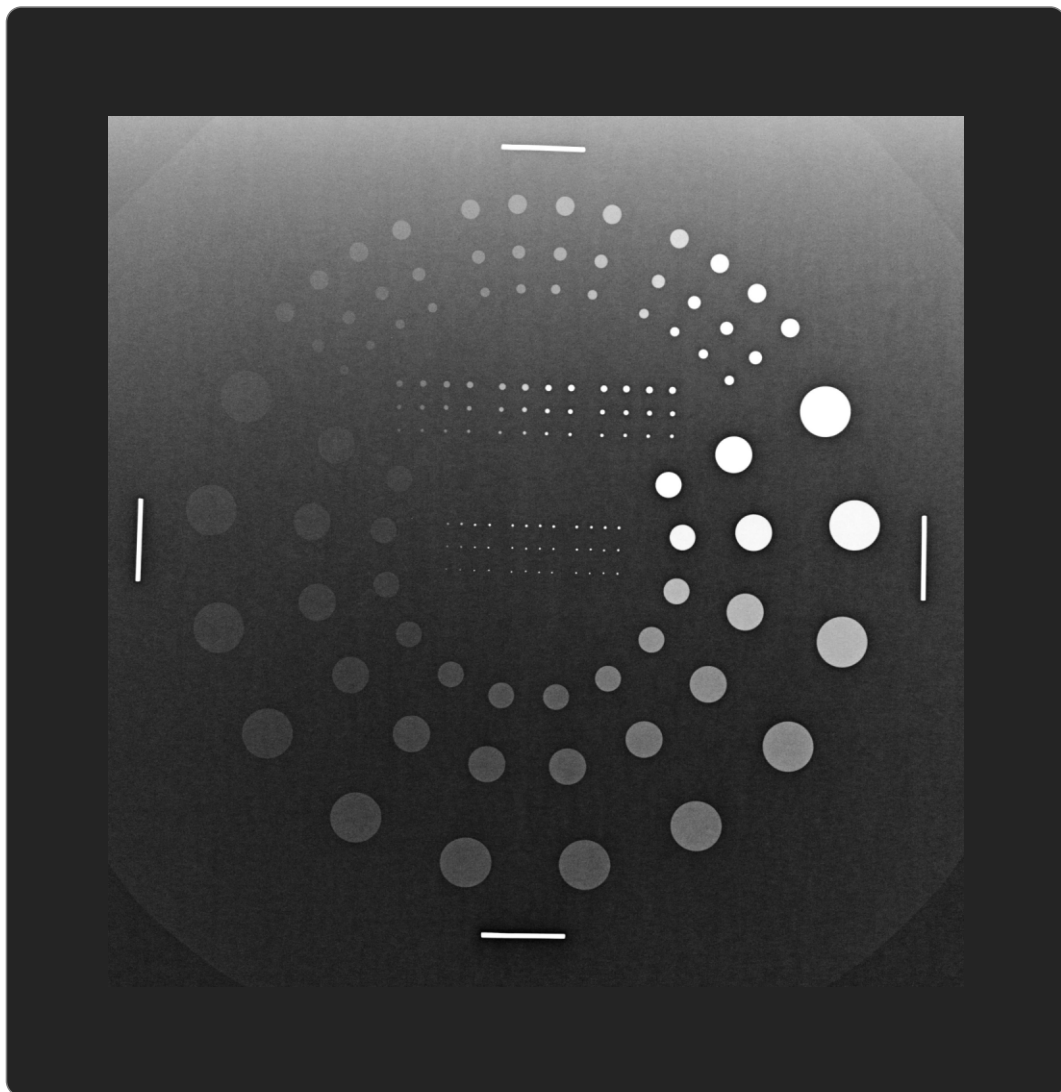


fig. 3 Radiograph of TO 20

www.leadstestobjects.com